

ChemiDoc and ChemiDoc MP Imaging Systems

Fluorescence and chemiluminescence detection
without compromises.

BIO-RAD

High-Performance Imaging

As sensitive as film, with advanced blot detection technology to determine best exposure for faint and intense bands

Easy Acquisition Features

Includes image preview, auto-focus, auto-exposure, and additional exposure options

Convenient Data Storage and Sharing

Export images via USB or network connection

Imagine No Compromises

- Unmatched fluorescence and chemiluminescence performance
- Powerful and intuitive software
- U.S. FDA 21 CFR Part 11 compliance

Image Assessment at the Point of Acquisition

Pinch and zoom images on the 12-inch touch screen; access a range of tools with Image Lab Touch Software



Smart Tray Technology

Automatically recognizes your application



Fluorescent and chemiluminescent blots, stain-free gels/blots, and ethidium bromide, SYPRO Ruby, and other stains.



Coomassie Blue, silver, and other stains.

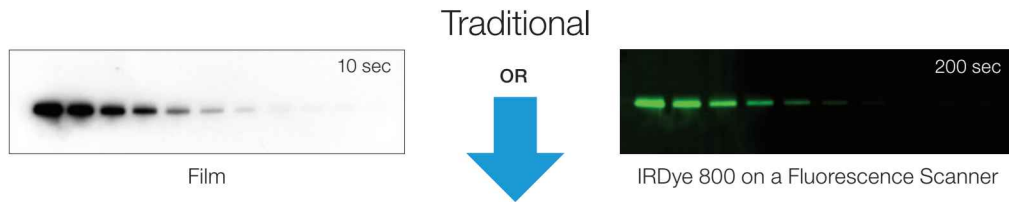


GelGreen or any SYBR® stains.

MORE THAN TRADITIONAL WESTERN BLOTTING

One instrument. Many options.

Why compromise when a single imaging system can do it all?



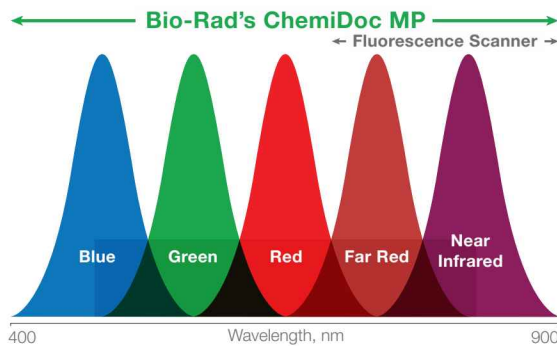
ChemiDoc MP System

The superior quantitation of digital meets the sensitivity of film and delivers the best fluorescence performance with Bio-Rad's brightest new fluorophore.



More flexibility in dye selection.

Detect up to three proteins in a single experiment with a wide range of supported fluorophore options.



DyLight 488
Alexa Fluor 488
Cy2

DyLight 650
Alexa Fluor 647
Cy5
SYPRO Ruby

DyLight 800
Alexa Fluor 790
Cy7
IRDye 800

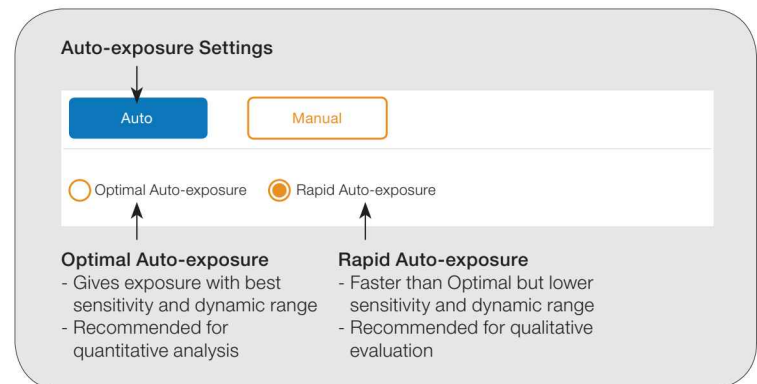
StarBright B520
DyLight 550
Alexa Fluor 546
Cy3
Rhodamine

StarBright B700
DyLight 680
Alexa Fluor 680
Cy5.5
IRDye 680

Not your traditional software.

Image Lab Touch Software:

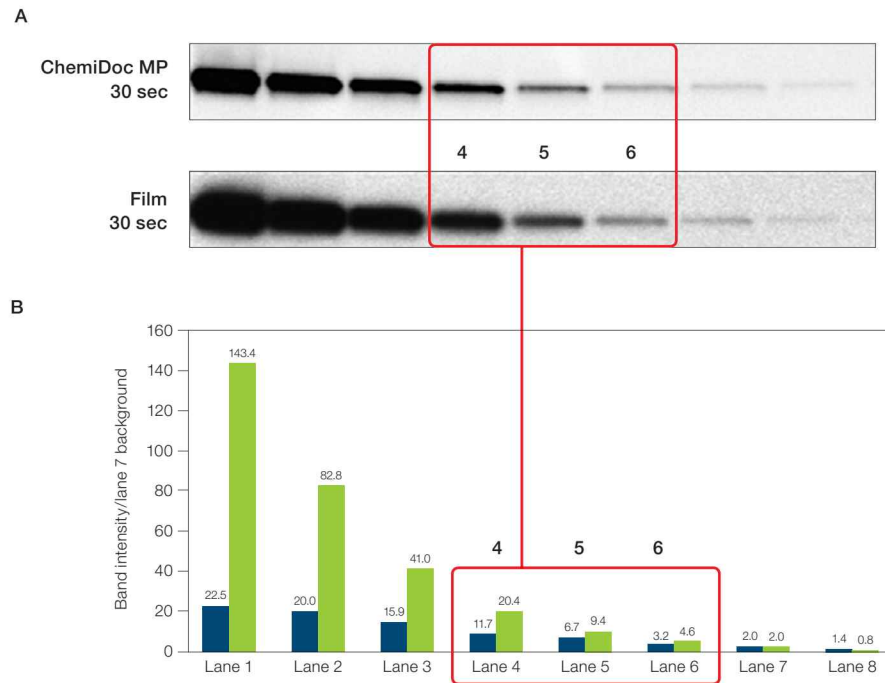
- Teaches as you tap and explore
- Picks optimal light source and filters
- Suggests exposure times



A BETTER WAY TO WESTERN BLOT

High-performance chemiluminescence imaging

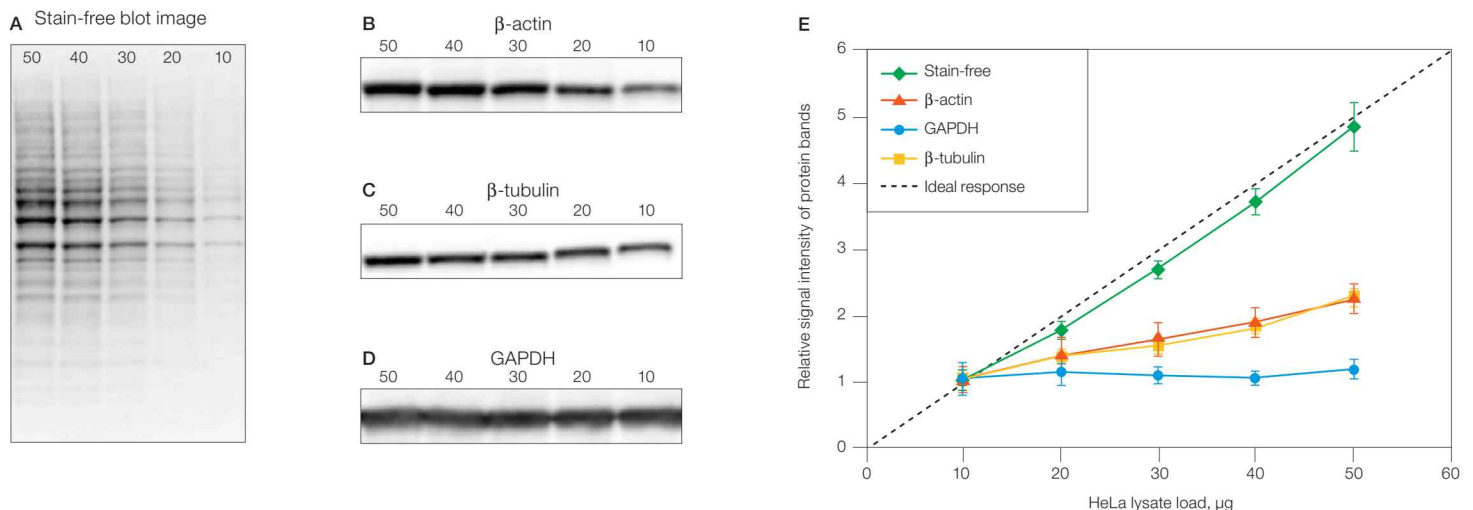
Get the sensitivity of film without the hassles of film processing or darkroom chemicals.



Comparison of sensitivity between the ChemiDoc MP Imaging System and film. **A**, western blot analysis of LacI expression was conducted using 2x serial dilutions (starting at 0.31 μg protein) of *E. coli* cell lysate. The membranes were either imaged on the ChemiDoc MP Imaging System for 30 sec or exposed to film for 30 sec. **B**, band intensities, normalized to lane 7 background, illustrate the ability of the ChemiDoc MP Imaging System to detect low signal bands at the same exposure time as film. The red boxes represent the limited linear dynamic range of film. ChemiDoc MP Imaging System, 30 sec (■); film, 30 sec (■).

A better way to normalize quantitative western blots.

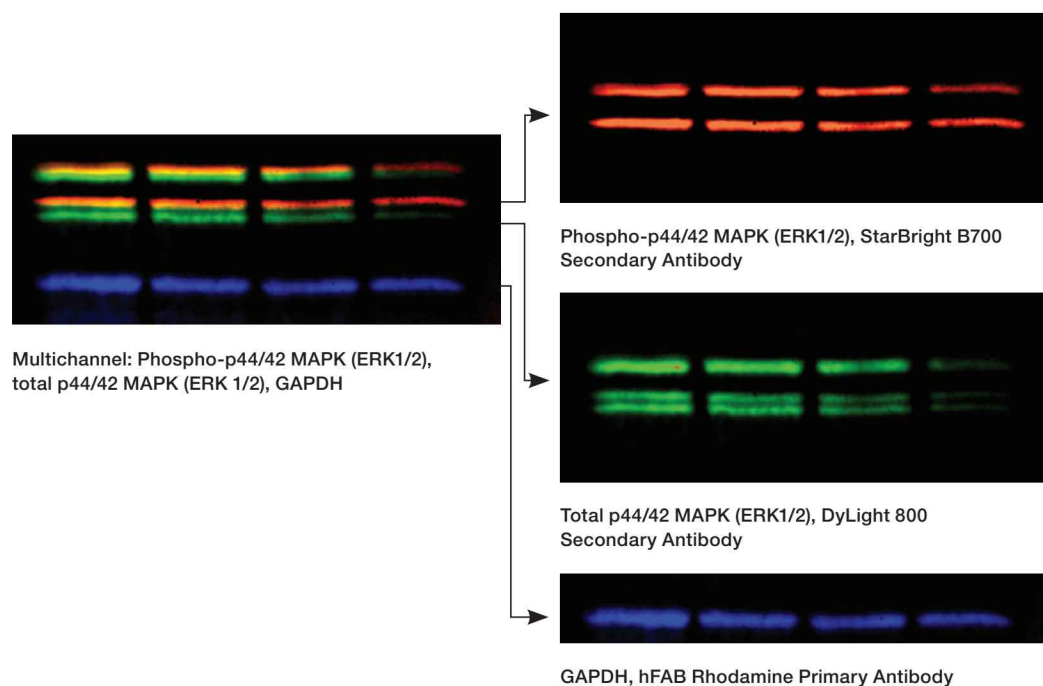
Normalizing blots with housekeeping proteins (HKPs) requires time, money, and additional sample to validate HKP expression and linearity. Total protein normalization using stain-free technology and the ChemiDoc or ChemiDoc MP System allows normalization across a wide dynamic range. Get better, more publishable data without lengthy optimization.



Comparison of protein normalization using stain-free technology and commonly used housekeeping proteins. Tenfold dilutions of HeLa cell lysates ranging from 50 to 10 μg were loaded for samples detected with stain-free technology (**A**) and the housekeeping proteins β -actin (**B**), β -tubulin (**C**), and GAPDH (**D**). The protein quantification signal is higher with stain-free technology than with housekeeping genes (**E**).

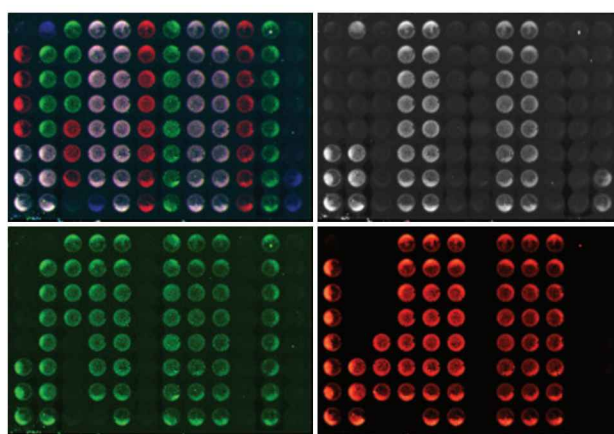
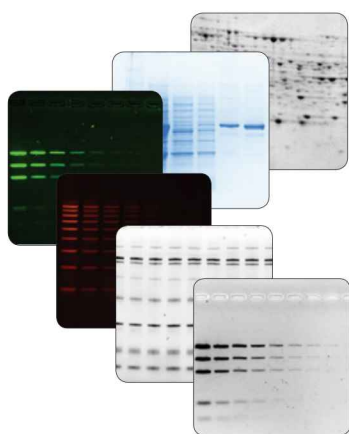
One blot. Three results. More colors. More answers.

Why strip and reprobe and potentially lose some of your protein or bias your results? Or face the data presentation challenges of cut blots? The ChemiDoc MP System lets you visualize signal from three independent channels on a single blot and allows you to distinguish overlapping signals resulting from even the smallest posttranslational modifications.

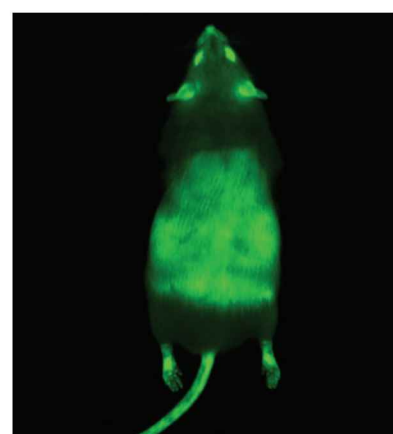


Application versatility

The current pace of research requires application versatility. The ChemiDoc MP System accommodates a wide variety of applications common in protein and nucleic acid experiments, imaging a variety of sample types and detection methods.



Cell-based microplate assay used to quantify HEK 293 cells (25,000–45,000 cell density). GAPDH (rhodamine), mouse anti-actin gamma (DyLight 680), and rabbit anti-p53 (DyLight 800) image was acquired on a ChemiDoc MP System for 24 sec via auto-exposure.



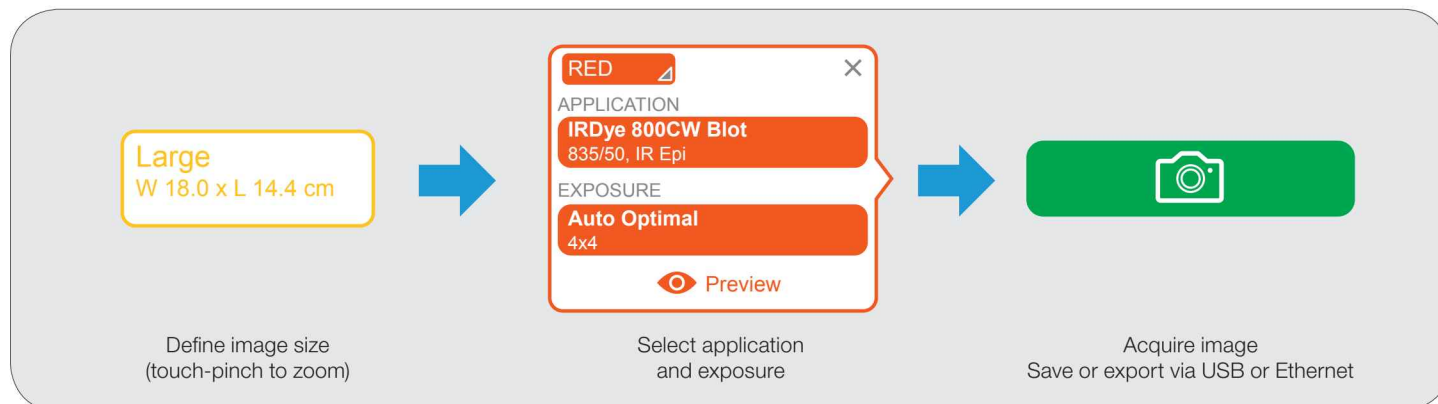
Visualization of the ubiquitous expression of enhanced green fluorescent protein (EGFP) in transgenic mice (partially shaved midsection). The epifluorescent image was acquired on a ChemiDoc MP System for 0.020 sec with a blue LED epi-illumination source and a 532 nm/28 mm band pass filter (Cy2 settings).

POWERFUL ACQUISITION AND ANALYSIS SOFTWARE

Acquire publication-quality images in seconds

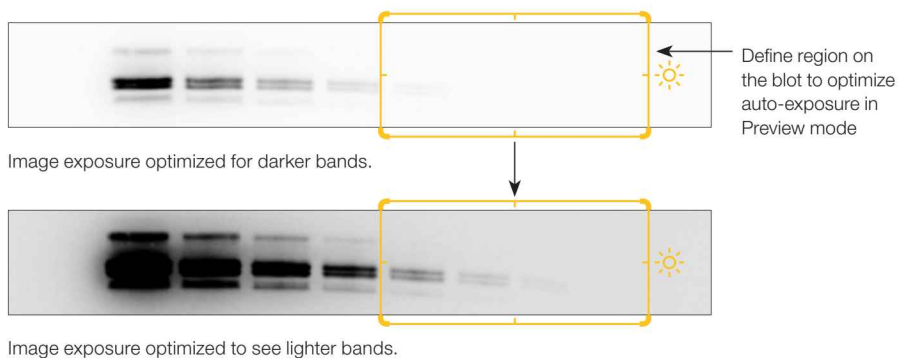
Image Lab Touch Software's intuitive user interface and image acquisition let you acquire exportable images of gels and blots that are ready for publication.

Easy Workflow



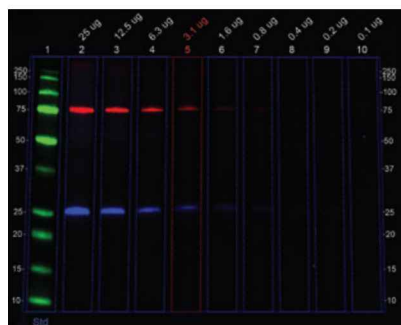
Optimal imaging every time:

- Automatic camera settings and selection of illumination sources and filters
- Optimized exposure for specific bands of interest

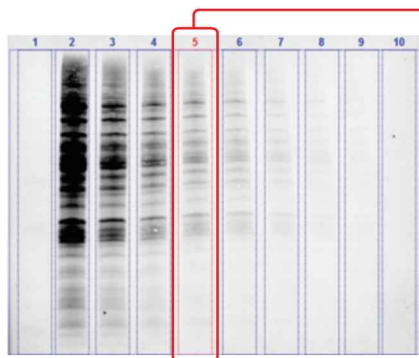


Analyze with certainty on a PC or Mac

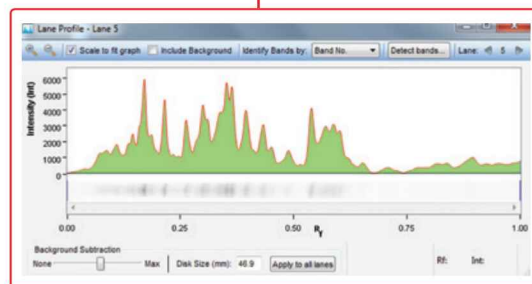
Automated lane and band detection, molecular weight determination, and normalization are just a few clicks away with Image Lab Software.



Annotation to make interpretation and publication easy.

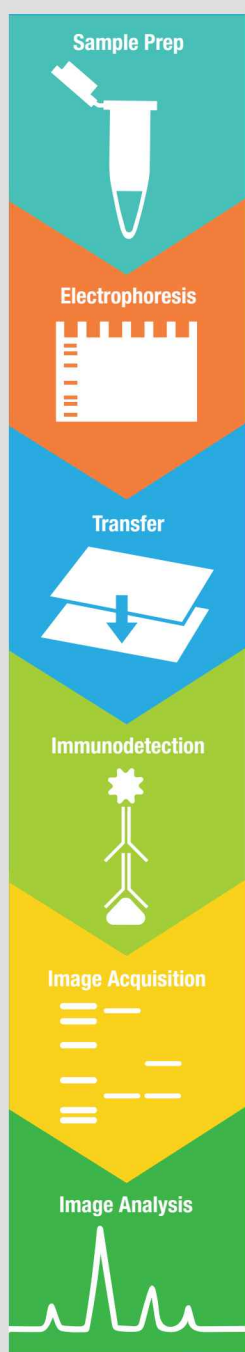


Stain-free imaging allows for total protein normalization.



Lane profiling of total protein signal helps remove background and refine band detection.

More than an imaging system. A fully supported western blotting workflow.



Sample Prep:

SureBeads Protein A or G Magnetic Beads

Easy, fast, and cost-effective for better immunoprecipitation.

Electrophoresis:

Stain-Free Gels

Rapid protein separation and normalization without the hassles of staining.

Transfer:

Trans-Blot Turbo Transfer System

Get to the finish line faster with transfers as short as 3 minutes.

Immunodetection:

PrecisionAb Validated Western Blotting Antibodies

Sensitivity, specificity, reproducibility — antibodies you can rely on.

Image Acquisition:

ChemiDoc MP Imaging System

Fluorescence and chemiluminescence detection without compromises.

Image Analysis:

Image Lab Software Family

Easy to use, automated, and powerful.

Visit bio-rad.com/gowestern to see our complete workflow.

Experience in design and performance. Built to fit every need.

Image gels and blots and take advantage of an easy upgrade path to multiplex fluorescence imaging.

	ChemiDoc MP System	ChemiDoc System
Chemiluminescence imaging with the sensitivity of X-ray film	✓	✓
Multiplex RGB and IR fluorescence imaging	✓	Upgradeable to ChemiDoc MP System
Nucleic acid and protein gel imaging	✓	✓

Specifications

Automation Capabilities

Smart Tray Technology	ChemiDoc Imaging Systems automatically recognize your application-specific tray and adjust imaging parameters and software options accordingly
Auto-focus	Precalibrated focus for any zoom setting or sample height
Auto-exposure	Two auto-exposure algorithms (rapid or optimal)
Image flat fielding	Dynamic; precalibrated and optimized for every application

Hardware Specifications

Touch-screen functionality	Multitouch capable (2 points) 12" display
Maximum image area (W x H)	21 x 16.8 cm
Detector	Cooled CCD, 6 megapixels
Dynamic range	>4 orders of magnitude
Illumination source	Trans-UV, 302 nm Epi-white Trans-white (requires White Sample Tray) Trans-blue, 450–490 nm (requires Blue Sample Tray) Epi-blue, 460–490 nm excitation* Epi-green, 520–545 nm excitation* Epi-red, 625–650 nm excitation* Epi-far red, 650–675 nm excitation* Epi-near IR, 755–777 nm excitation*
Filters	590/110 nm standard filter to perform protein and DNA gel and blot imaging, chemiluminescence filter, 518–546 nm filter, 577–613 nm filter, 675–725 nm filter, 700–730 nm filter, 813–860 nm filter
Data output	16-bit or 8-bit: SCN, TIFF, JPEG image files
Instrument weight	35 kg (78 lb)
Instrument size (L x W x H)	61 x 51 x 53 cm
Operating voltage	100–250 V
Operating temperature	10–28°C
Operating humidity	10–85% relative humidity (noncondensing)

* Only with ChemiDoc MP System.

Visit bio-rad.com/ChemiDoc to learn more about ChemiDoc Imaging Systems.

Bio-Rad and Trans-Blot are trademarks of Bio-Rad Laboratories, Inc. in certain jurisdictions. SYBR is a trademark of Thermo Fisher Scientific Inc. All trademarks used herein are the property of their respective owner.

Ordering Information

Catalog #	Description
12003154	ChemiDoc MP Imaging System , includes blot and gel imaging system, UV/visible light imaging, chemiluminescence, 5 fluorescence channels (RGB, far red, NIR). Includes internal computer, 12" touch-screen display, Image Lab Touch Software, blot/UV/stain-free sample tray
12003153	ChemiDoc Imaging System , blot and gel imaging system, UV/visible light imaging, chemiluminescence, upgradeable for multiplex fluorescence detection. Includes internal computer, 12" touch-screen display, Image Lab Touch Software, blot/UV/stain-free sample tray
Accessories	
12003026	White Sample Tray for ChemiDoc MP/ChemiDoc Imaging Systems , for gels stained with copper, silver, or zinc stains
12003027	Blue Sample Tray for ChemiDoc MP/ChemiDoc Imaging Systems , for gels stained with GelGreen or any SYBR® stains
12003028	Blot/UV/Stain-Free Sample Tray for ChemiDoc MP/ChemiDoc Imaging Systems , for chemiluminescent and fluorescent blots, stain-free gels/blots, and gels stained with ethidium bromide, SYPRO Ruby, Oriole, SYBR® Stains, and Coomassie Blue
1708377	Holder for ChemiDoc MP/ChemiDoc Sample Trays and UV Shield
12003914	UV Safety Shield for ChemiDoc MP/ChemiDoc Imaging Systems
12003915	Gel Alignment Templates for ChemiDoc MP/ChemiDoc Imaging Systems
1708089	Mitsubishi Thermal Printer
1707581	Mitsubishi Thermal Printer Paper , 4 rolls
12005137	IQ/OQ Kit for ChemiDoc MP/ChemiDoc Imaging Systems , for installation qualification/operational qualification
12003263	Upgrade Kit , ChemiDoc to ChemiDoc MP Upgrade Kit, includes all illumination and filters for RGB and near IR/IR fluorescence imaging
Software	
1709690	Image Lab Software , stand-alone version, PC or Mac, for viewing images and 1-D analysis
1709691	Image Lab Software, Security Edition, 1 license , U.S. FDA 21 CFR Part 11 module for Image Lab Software, 1 license, for use with ChemiDoc MP, ChemiDoc, ChemiDoc XRS+, Gel Doc EZ, Gel Doc XR+, and GS-900 Imaging Systems



**Bio-Rad
Laboratories, Inc.**

Life Science
Group

Web site bio-rad.com USA 1 800 424 6723 Australia 61 2 9914 2800 Austria 43 01 877 89019 Belgium 32 03 710 53 00 Brazil 55 11 3065 7550 Canada 1 905 364 3435 China 86 21 6169 8500 Czech Republic 36 01 459 6192 Denmark 45 04 452 10 00 Finland 35 08 980 422 00 France 33 01 479 593 00 Germany 49 089 3188 4393 Hong Kong 852 2789 3300 Hungary 36 01 459 6190 India 91 124 4029300 Israel 972 03 963 6050 Italy 39 02 49486600 Japan 81 3 6361 7000 Korea 82 2 3473 4460 Mexico 52 555 488 7670 The Netherlands 31 0 318 540 666 New Zealand 64 9 415 2280 Norway 47 0 233 841 30 Poland 36 01 459 6191 Portugal 351 21 4727717 Russia 7 495 721 14 04 Singapore 65 6415 3188 South Africa 36 01 459 6193 Spain 34 091 49 06 580 Sweden 46 08 555 127 00 Switzerland 41 0617 17 9555 Taiwan 886 2 2578 7189 Thailand 66 2 651 8311 United Arab Emirates 971 4 8187300 United Kingdom 44 01923 47 1301

